

Measurements °C

Sp1	51.9
-----	------

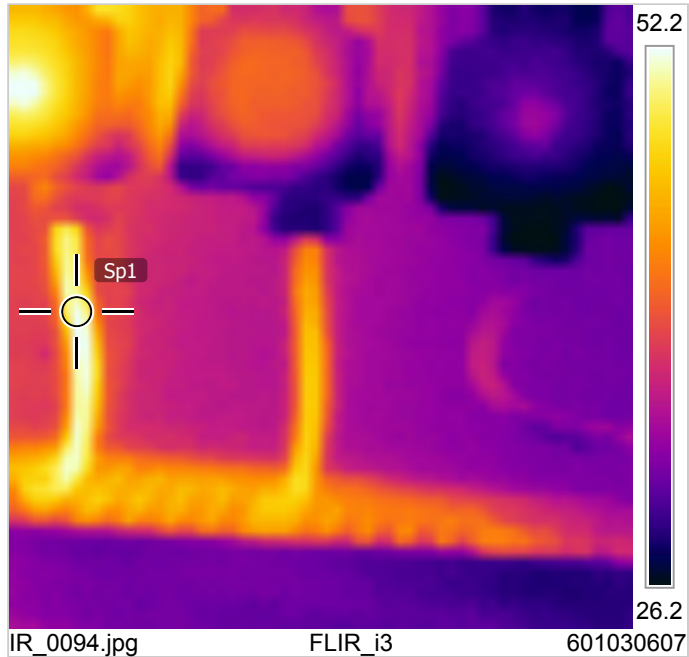
Parameters

Emissivity	0.8
Refl. temp.	20 °C
Distance	1 m
Atmospheric temp.	20 °C
Ext. optics temp.	20 °C
Ext. optics trans.	1
Relative humidity	50 %

Image Description

Fuse set Bio panel

18/07/2013 06:57:45



18/07/2013 08:00:14

